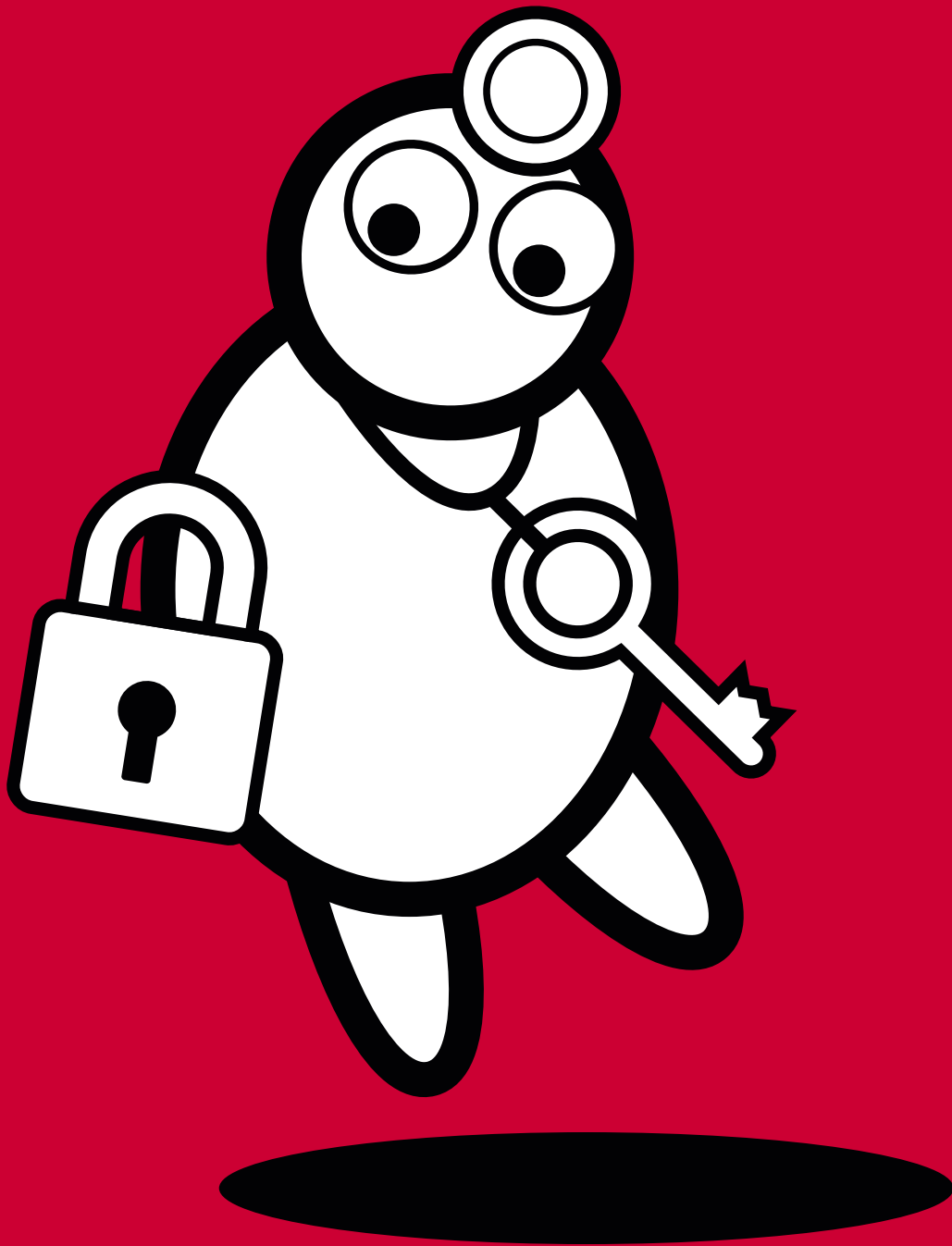


Your key to success



Log in for more value

The gateway to your medical target group

Due to legal restrictions, some online content may only be accessed by healthcare professionals. Setting up and maintaining your own password-protected system takes a lot of time and effort, but there is an alternative: DocCheck Login.

With the DocCheck Login, you can provide healthcare professionals with access to expert information and benefit from a whole host of additional services. It features the latest analytical tools, so you can get to know your target group better and tailor your marketing activities accordingly.

There are three DocCheck Login license versions available:



1. Basic

- User registration and profession verification
- User support
- Login button in six languages
- Password protection with profession check
- Online configuration of the login details in DocCheck CReaM



2. Economy

- All features of the Basic License
- More flexibility through transfer of encrypted parameters
- Additional security through OAuth2 (Client Secret)
- Pseudonymous recognition of returning website visitors
- Routing of visitors according to profession, country and language



3. Business

- All features of the Basic and Economy Licenses
- Transfer of personal data with the visitor's consent
- Access for company employees via email domain





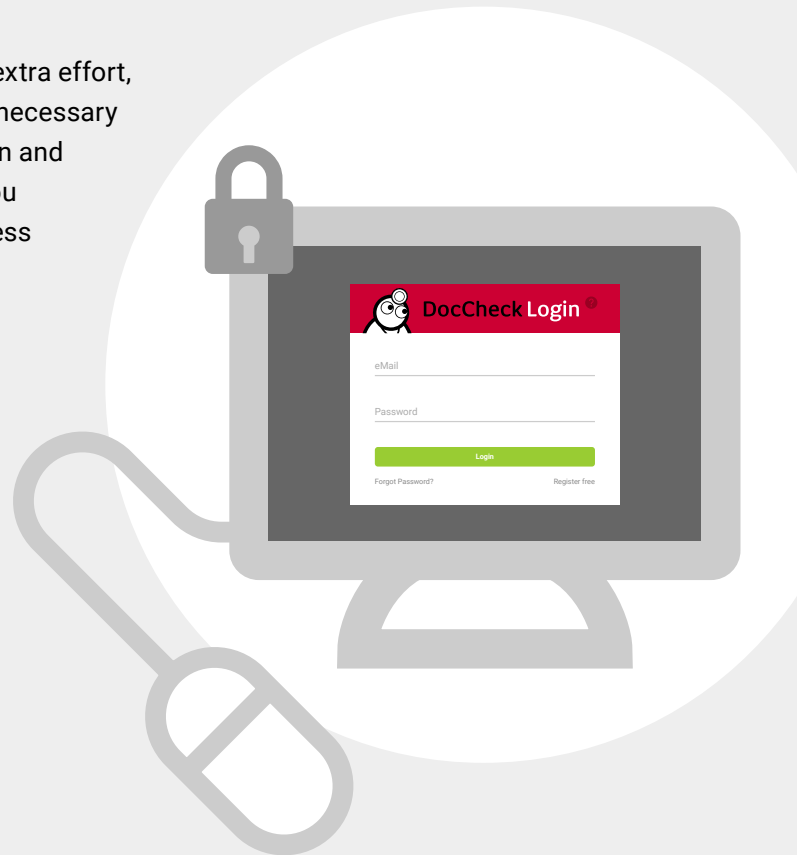
The Basic License

Free password protection for your website

Create a protected area on your website without any extra effort, costs or user administration. DocCheck supplies the necessary infrastructure for registration, professional verification and support, as well as the login form for your website. You decide which professional groups are allowed to access your website.

The advantages

- Legislation-compliant protection
- Exclusive access
- More than 600,000 healthcare professionals



DocCheck CReaM

DocCheck CReaM (<https://crm.doccheck.com>) is the online platform behind the DocCheck Login, which makes managing your login details a piece of cake:

- Create new logins for your websites
- Edit the access privileges assigned to the professions
- Get the HTML code required to integrate the login form into your website

But that's not all: DocCheck CReaM also lets you create test passwords for your website or find out about the login behaviour of your website visitors using the additional statistics function.

Free





The Economy License

More features, total control

The Economy License offers all the benefits of the Basic License – and much more. You'll enjoy total control in the areas of security, tracking and routing.

Parameter transfer

With the transfer of parameters, you can pass through additional parameters of your website (e.g. session ID). So you'll enjoy greater security and flexibility.

OAuth2 (Client Secret)

OAuth2 is now part of today's security standard. With the help of a client secret, a key that is only known to your login and the authorization server, a secure login process is guaranteed. Within the Economy or Business license, we provide you with the Client Secret during activation.



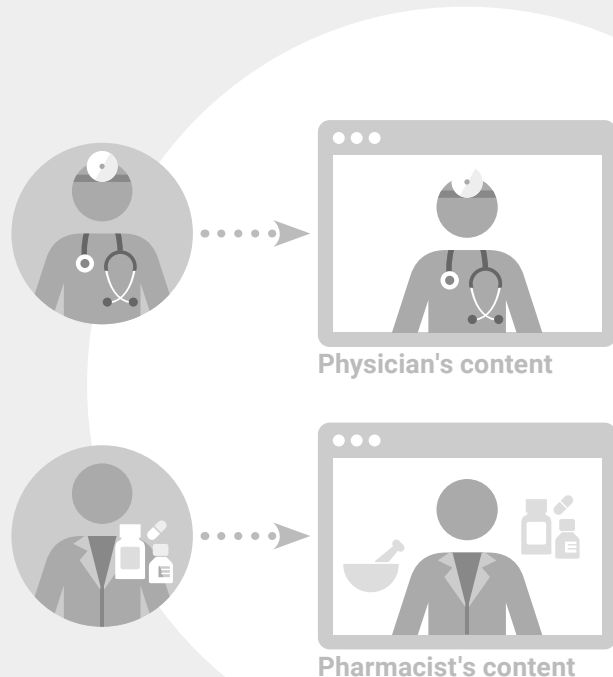
Unique Key

Recognise your visitors pseudonymised when they return to your website and customise the special offers they see on your website. DocCheck assigns each visitor a unique key. This ID is appended to the URL as a GET parameter after visitors have logged in.



Routing

Sort your users according to their profession, language or country – and direct them to different parts of your website. For example, after logging in, a doctor can be routed to a different page than a pharmacist would be directed to.



€ 160 per month

+ € 1,400 initial set-up fee





The Business License

Exclusive access

The Business License contains all features of the Economy License. It makes it possible to gather valuable information about your website users for your CRM – plus you can also set up an exclusive user group for your employees.

Personal

This feature is the ideal foundation for your online CRM system and for personally addressing users. When users log in for the first time, they are required to fill out an online form and agree to the forwarding of their personal data stored on DocCheck. This data can then be collected at the user data endpoint. From this point on, it is possible to identify individual users when they log in thanks to their unique key.



Access for company employees

Competitors should not be allowed to access your websites – that's why there's an option for excluding the professional group "Pharmaceutical Industry Employees". However you can still grant access to your own staff that have a DocCheck access (e.g. employees working outside the office), using the access option for company employees. The visitor's email address domain is used to determine whether they are one of your own employees.



€ 450 per month

+ € 4,800 initial set-up fee





Price list

	DocCheck Login		
	Basic	Economy	Business
Password protection features			
User registration Profession check User support Login button in 6 languages	●	●	●
Simple password protection Login administration via CReaM	●	●	●
Parameter transfer		●	●
OAuth2 (Client Secret)		●	●
Unique Key		●	●
Routing (country, language, profession)		●	●
Transfer of personal user data upon consent			●
Domain-based access			●
License fees (per month)			
1.–3. login client	€ 0	€ 160	€ 450
4.–6. login client	€ 0	€ 145	€ 420
7.–9. login client	€ 0	€ 125	€ 375
from 10. login client	€ 0	available on request	
Initial set-up fee		€ 1,400	€ 4,800

The above prices refer to individual licenses for use with one website with one login.
Please contact us if you require a company wide license (for all company websites).

All prices are in euros and do not include VAT.



Your contact



Lara Wild
Product Manager



Antonio Melchionda
Customer Success Manager



Markus Haberl
Junior Product Manager

+49 221 92053-595
industry@doccheck.com



DocCheck Community GmbH
Vogelsanger Str. 66
50823 Cologne, Germany
www.doccheck.com

